



141st Barwon Regatta 2022 Information Bulletin

The Barwon Regatta will be staged on Saturday 29th & Sunday 30th January 2022. This will be the 141st staging of the Barwon Regatta.

The GRA is extremely grateful for the support of the City of Greater Geelong and the Corangamite Catchment Management Authority and is intent on presenting a quality event with competitive, safe and fair racing being of the highest priority.

COVID

Please refer to RV website for any COVID restrictions/ requirements for attending this regatta.

Winners of all Club and School "A" Finals to Receive Medal

Individual winning crew members of all A Finals, both club and school events, will receive a medal. Medals will be presented at the presentation dais adjacent to the Judges Box in the Morell Reserve. Winning crews and scullers, with their coach or a club/school representative, are to present themselves as a full crew to the presentation dais at any time after winning their A final.

Perpetual Trophies

Perpetual trophies will be awarded for the events listed below. These trophies will be on display in the Bob Morell reserve (the spectator area) adjacent to the Judges Box and the presentation dais and the trophies are available for a crew photo but are not to be taken from the immediate area.

Male School Eight Open Division 1 – Frank C Covill Cup

Female School Eight Open Division 1

Male School Coxed Four Open Division 1

Female School Coxed Four Open Division 1 – City of Greater Geelong Trophy

Female School Quad Scull Open Division 1

Male Club Pair – Mayors Challenge Trophy

Male A Grade Eight – W.R.B. Grose Cup

Female Under 19 Coxed Four – Barwon Challenge Cup

Male Under 19 Eight – W.H. Pincott Cup

Female Under 19 Eight – Ladies Challenge Cup

Male B Grade Coxed Four – Centenary Cup.

Female C Grade Quad Scull – Bob Morell OAM Memorial Cup

Male Beginner Coxed Four – The "Scotty" Trophy



Female Club Single Scull – Mayor’s Challenge Cup
Female C Grade Single Scull – Leisa Wilson Memorial Cup
Male C Grade Double Scull – John Virgona Cup
Male Club Single Scull – Jeff Sykes Cup
Male School Eight Year 10 Division 1 – Ian Farran Trophy
Male C Grade Single Scull - John Breed Trophy

Please note that if any of the abovementioned events are not held, the trophies may be presented for an alternate event. For example, if no entries in the Male Club Pair, the trophy may be presented to the Male A Grade Pair.

Boat Trailer Access only into Boatshed Area

Only vehicles towing boat trailers will be allowed into the boat shed area for both days of the regatta. Car parking is available in the surrounding streets (check the parking times and days) and also on the south bank of the river. Please also note that boat trailers park in the area east of Corio Bay Rowing Club, known as Tom & Gerrys and cars should not be parked in this area as trailers need to enter and exit and load and unload.

It is requested that all trailers and vehicles in the boat shed area are parked on the north side of the access roadway so as to allow for emergency and official vehicles to utilize the roadway behind the rowing sheds.

Entry Gate to Boatshed Area

The area around the main entry gate into the boatshed area behind Corio Bay Rowing Club – the intersection of Yarra St and Barwon Tce – is to be kept as clear as is possible. For those competitors being dropped off by a parent, friend, etc, the drop off should take place well away from the main entry gate so as to minimize the amount of vehicle traffic within the intersection.

Bow Numbers

Bow Numbers will be located at the front of the Jeff Sykes Rowing Centre Geelong in the boat shed area.
Refer to the Barwon Regatta Facilities Layout plan on page 7 of this bulletin.

First Aid

First Aid (Surf Life Saving Victoria) will be located next to the boat landing in front of the Corio Bay Rowing Club.
Refer to the Barwon Regatta Facilities Layout plan on page 7 of this bulletin.

Boat Racks

There are HOSG temporary boat racks available for use by visiting clubs and schools. The racks are stored between the Jeff Sykes Rowing Centre and Corio Bay Rowing Club and can be used based on the proviso the racks are returned to the storage area by the users at the end of the regatta.

RV Extreme Heat Policy

Subject to weather conditions, the RV Extreme Heat Policy may be enforced.



Bicycle/Pedestrian Path

The bike/pedestrian path in the boat shed area is to be kept clear of oars, boats and all other items. Bows and sterns of boats stored on slings are NOT to extend over the path.

Landing Warning

The river level has recently been high and as a result, the landing may be slippery and the water level may be over the edge of the landing. Crews/scullers are to take caution when using the landing.

Riding of Bicycles / Bike Helmets

Bikes are to be wheeled through both the boat shed and the spectator areas. Bicycle riders are encouraged to abide by the law and wear helmets. Bicycle riders can "detour" along the firemen's track in the Bob Morell Reserve.

Car Parking Bob Morell Reserve

Only official and catering vehicles are permitted to travel and park in the Bob Morell Reserve.

Other than emergency vehicles, under no circumstances are vehicles permitted to travel under the Moorabool St bridge between the Bob Morell Reserve and the boat shed area.

Club/School Marquees

Clubs and schools may erect their marquees in the Bob Morell Reserve area on a first in basis. No marquees, shade tents, umbrellas or the like are to be erected between the river edge and the bicycle/pedestrian path. Please consider other spectators when selecting the site for your marquee. Any club/school proposing to operate a BBQ will need to abide by Total Fire Ban rules if declared and have the appropriate fire extinguisher and other relevant safety equipment.

Catering

The Barwon Rowing Club catering marquee will be located in the Bob Morell Reserve just north of the judges box and will be operating on both Saturday and Sunday of the regatta with a delicious assortment of regatta foods and drinks. There will also be other food vendors selling smoothies and coffees/teas.

Regatta Headquarters / Secretary

The President of the Jury and the Regatta Secretary will be located in the Judges Box and will be accessible via the window on the north wall – please do not enter the judges box building and please keep the doorway free.

Bus Drop Off

Bus drop off area located in Barwon Tce adjacent to the entry gate to Tom & Gerrys. Refer page 6 of this bulletin. NOTE: Bus drop off only - not bus parking.



Clean Up of Boat Rigging/Competitor Rest Areas.

Clubs and schools are requested to clean up the area used for boat rigging/competitor rest areas. Items such as food wrappers, drink bottles, clothing and duct tape are often left behind.

Boat Trailers/Equipment left Overnight

It is recommended that items such as tool boxes, bikes and other “easy to carry away” equipment are not left stored overnight in the boat shed area and the Morell Reserve.

Overnight security will be in attendance, however, clubs and schools are responsible for their security of their equipment.

On the Rowing Course

Line of Buoys Upstream of 1500m Start

Crews, scullers, coxswains and coaches are to note the line of buoys located between the Shannon Ave (aka Princes Bridge) and the 1500m start. All crews and scullers rowing beyond the 1500m start line are to row past the last buoy (closest to Shannon Ave Bridge) before turning to proceed downstream to the 1500m start line. Refer to “Traffic Rules – Racing” map on page 7 & 8 of this bulletin.

Steering Markers

Steering markers for coxless crews/scullers will be in place behind the 1500m start line, a set of two markers per lane – one tall marker and one short marker. When a crew/scull is in the centre of the lane, the two markers will align and appear as one large marker. A crew/scull off course will see two markers that do not align. NOTE: The markers are for guiding crews/scullers in the first 200m of the course, after which crews/scullers can refer to the lane buoys for their correct course.

Regatta Traffic Rules

Regatta traffic rules will be displayed on the notice board adjacent to the Bow Numbers tent. Please note the rules in the interest of safety. The “Traffic Rules – Racing” maps are detailed on pages 7 & 8 of this bulletin.

Regatta traffic rules apply all day (midnight to midnight) and for each day of the regatta.

Transit Lane to Start

Crews, scullers, coaches and coxswains are reminded that there is no stopping or overtaking in the transit lane to the start and also travelling in this lane is to be single file.

Crews/scullers must NOT cross over onto the course when proceeding to the start. In order to maintain a continuous traffic flow in the transit lane, crews need to row as a complete crew, (e.g. not bow pair only in a four), so as not to create a bottle neck in the transit lane.



Race Times

Crews, scullers, coxswains and coaches are reminded that they should confirm their race times, arrange for their bow number in advance and allow sufficient time to be at the start line at least 5 minutes before their race time.

Good racing to all crews and scullers and we thank you for your support.



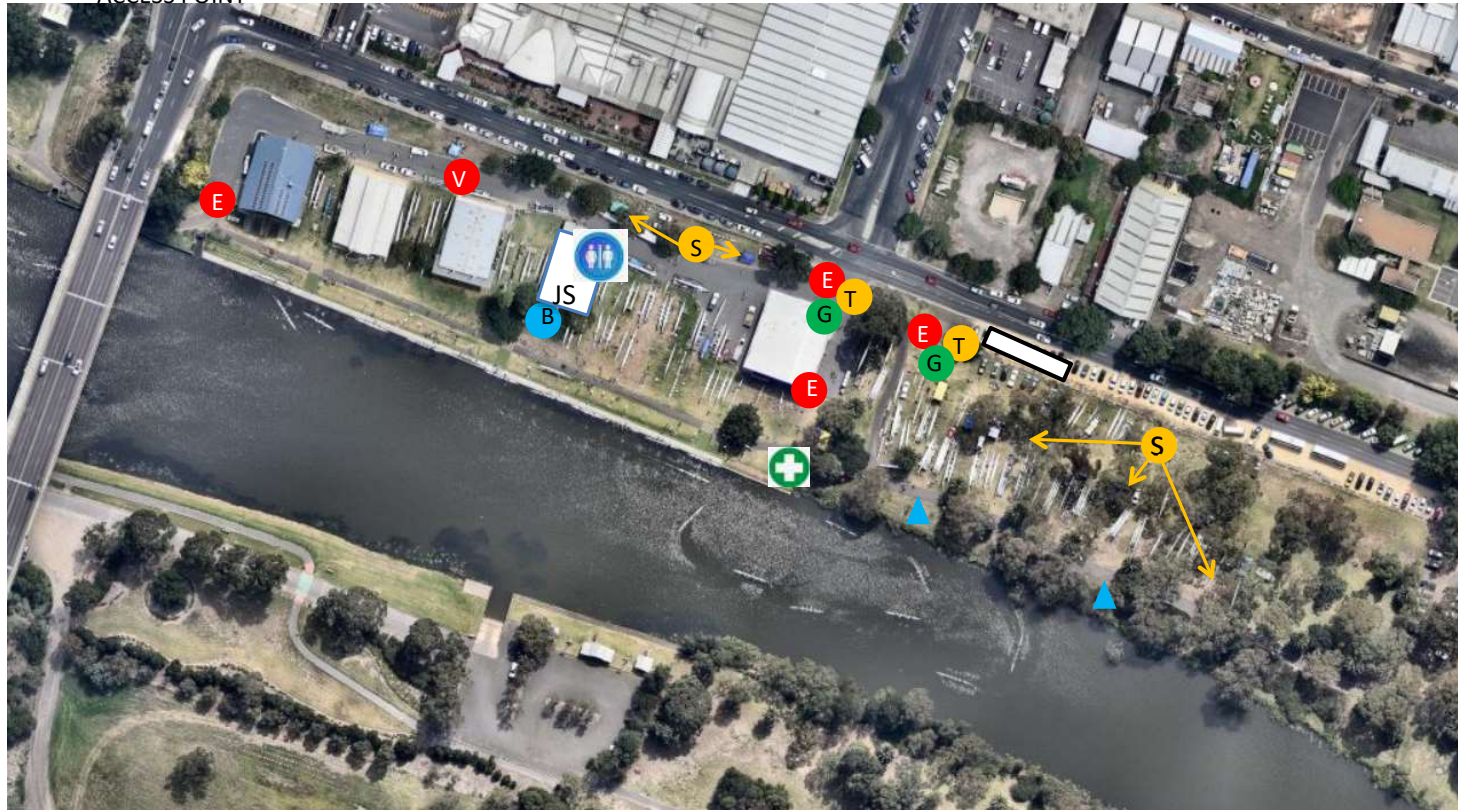
BARWON REGATTA 2022, BOAT SHED AREA – COMPETITORS, COACHES & OFFICIALS



E EMERGENCY VEHICLE ACCESS POINT

+ FIRST AID

V CLEAR EMERGENCY VEHICLE ACCESS TO BE MAINTAINED



B BOW NUMBERS &

TOILETS AT JEFF SYKES ROWING CENTRE

H PORTABLE TOILETS

S COMPETITORS SHADE MARQUEES/TENTS

T ENTRY FOR BOAT TRAILERS / VEHICLES CARRYING BOATS ONLY

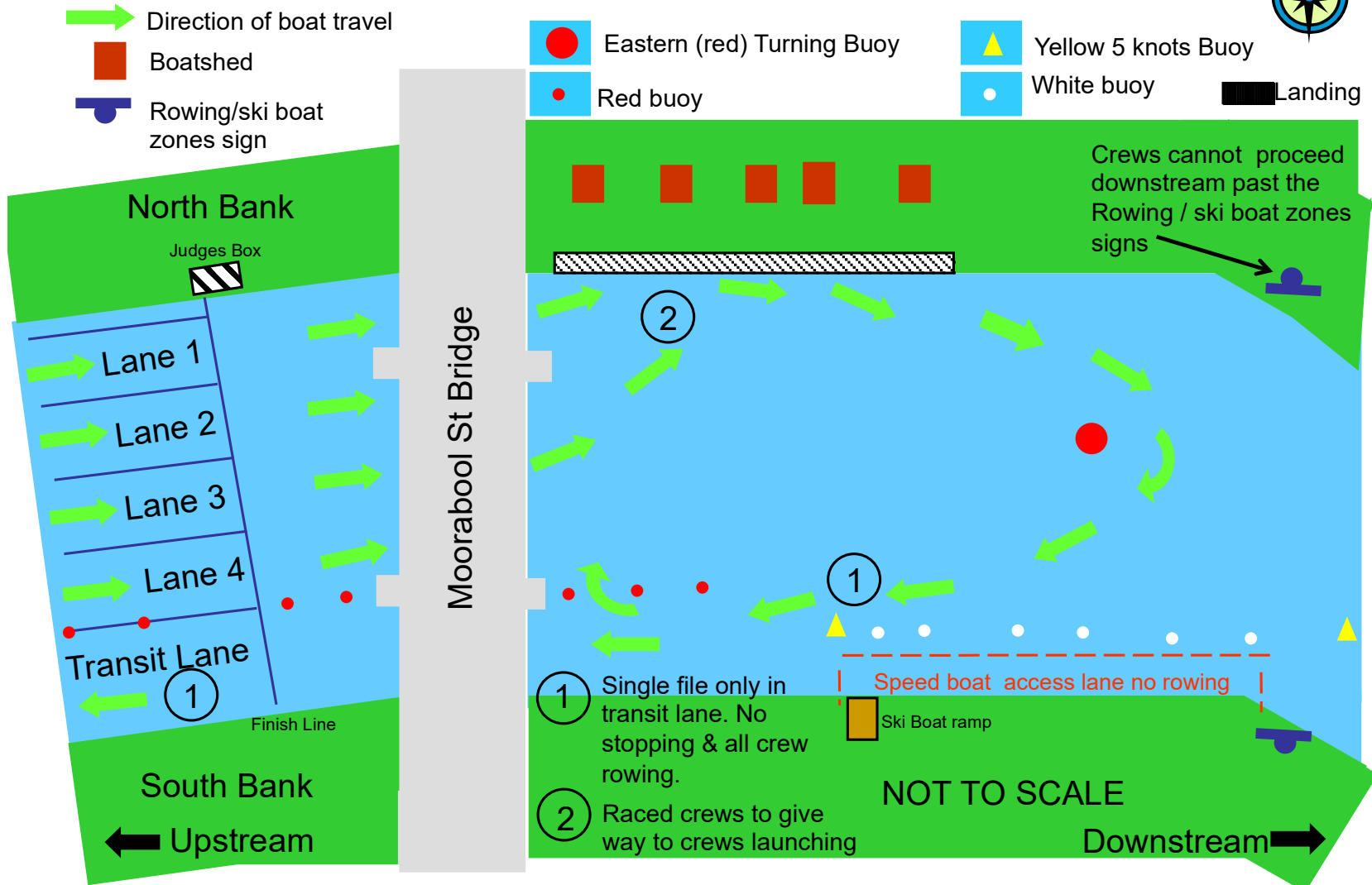
▭ BUS DROP OFF

▲ NO MARQUEES / TENTS BETWEEN PATH AND RIVER

G GATEKEEPER

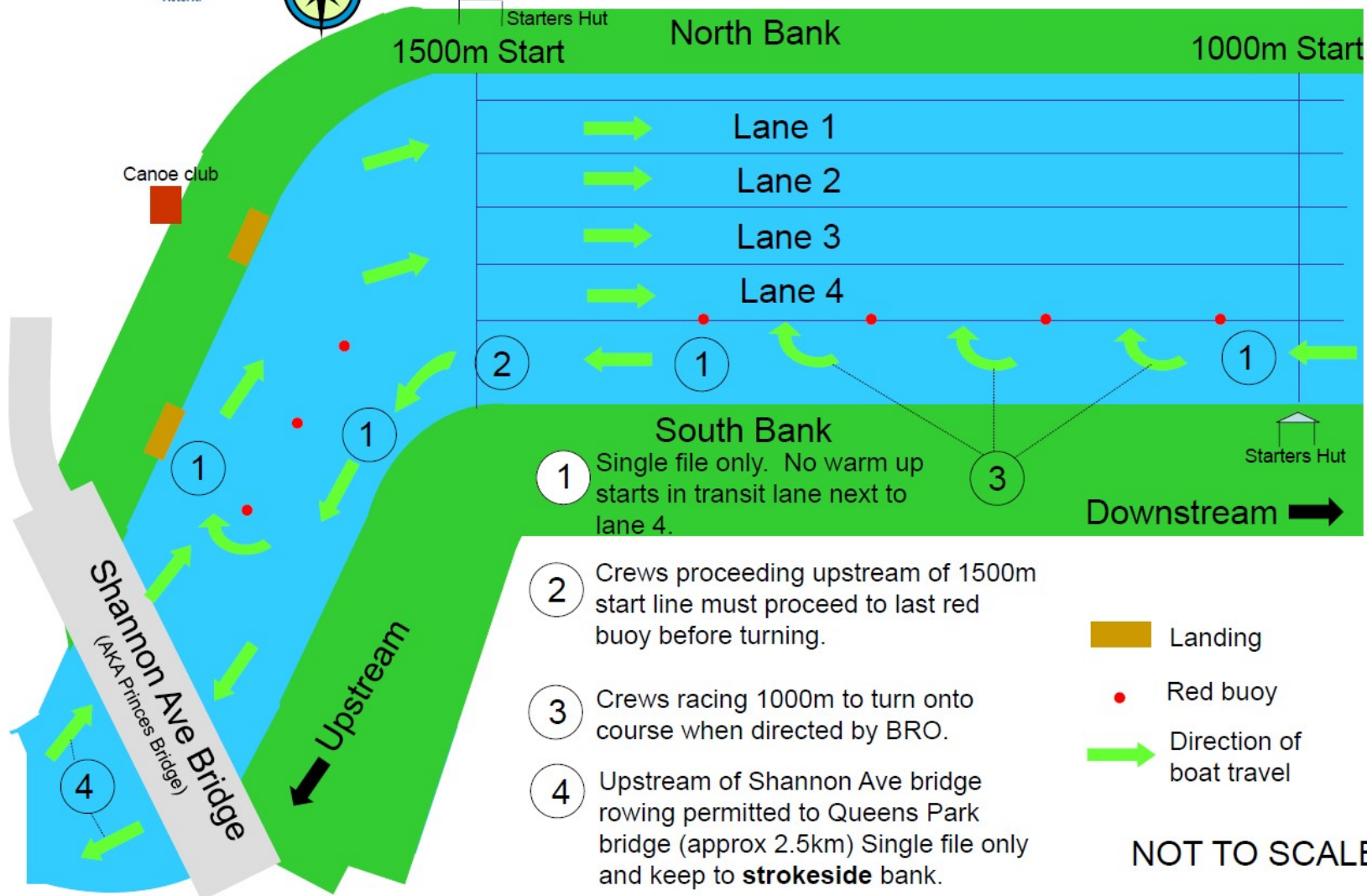


Barwon Regatta 2022 - Traffic Rules





Barwon River Regatta Traffic Rules



- 1 Single file only. No warm up starts in transit lane next to lane 4.
- 2 Crews proceeding upstream of 1500m start line must proceed to last red buoy before turning.
- 3 Crews racing 1000m to turn onto course when directed by BRO.
- 4 Upstream of Shannon Ave bridge rowing permitted to Queens Park bridge (approx 2.5km) Single file only and keep to **strokeside** bank.

- Landing
- Red buoy
- Direction of boat travel

NOT TO SCALE



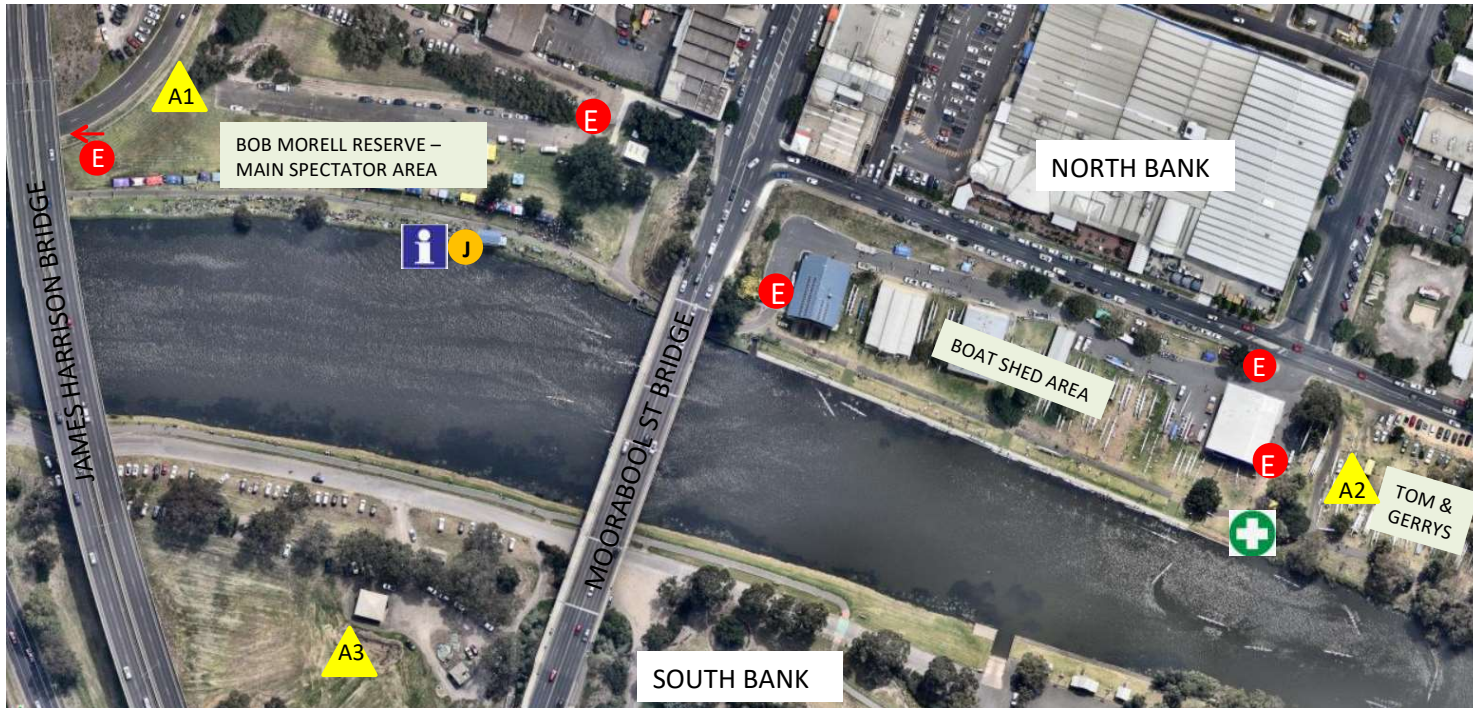


2022 BARWON REGATTA – EVACUATION ASSEMBLY POINTS & FIRST AID LOCATION



A EMERGENCY ASSEMBLY AREA

E EMERGENCY VEHICLE ACCESS POINT



i REGATTA INFO & BRO PROJ

+ FIRST AID

J JUDGES BOX – REGATTA SECRETARY,

